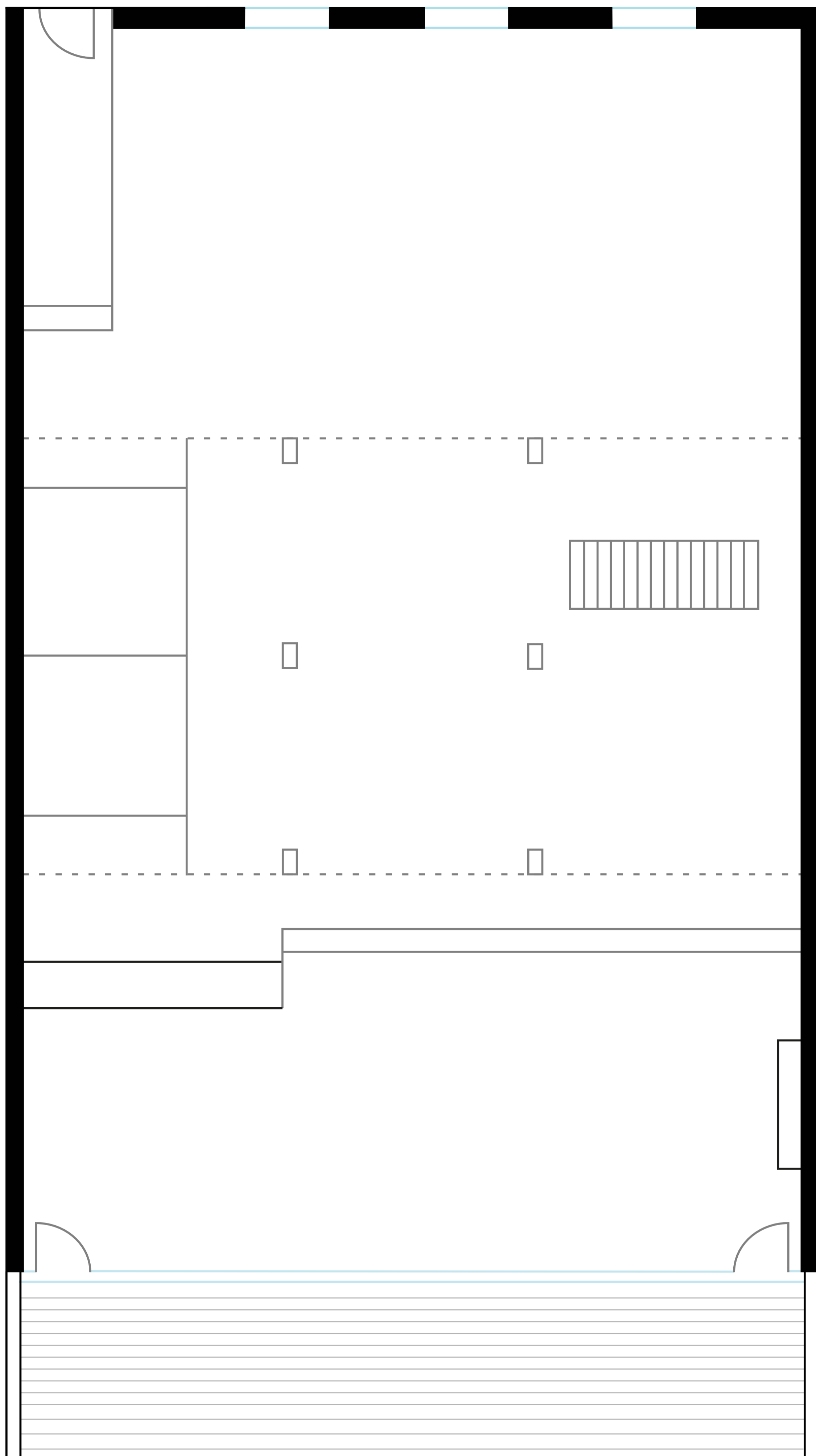
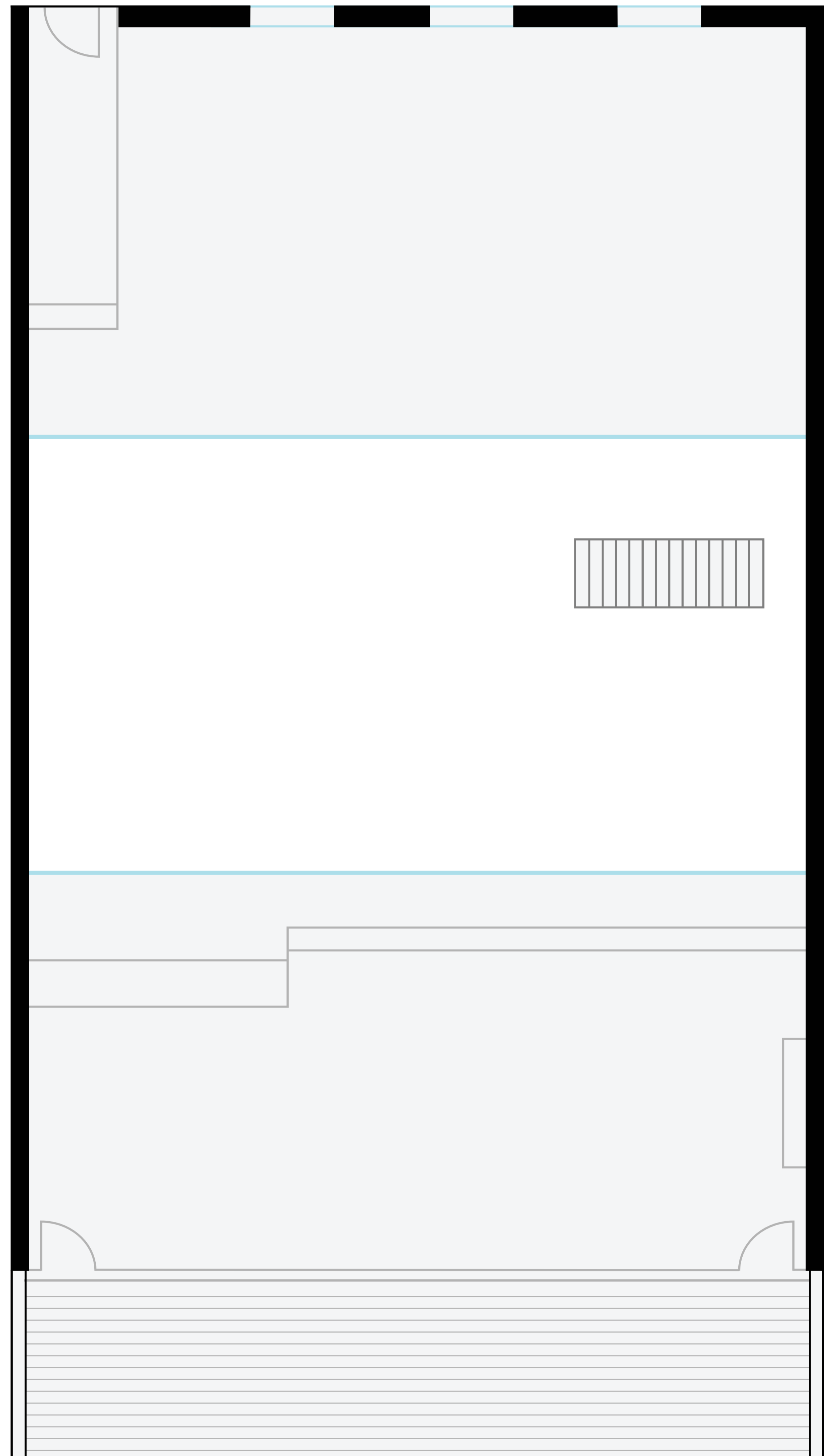


## GROUND FLOOR



SPREE WATERFRONT

## MEZZANINE FLOOR



SPREE WATERFRONT

## Arrangements & Setup Options

The studio is designed as an open-space with a large mezzanine floor. Its flexible set-up can be rearranged into various configurations, to fit specific event requirements. Our team is happy to assist with determining the best setup.